

**GME's Website
XML Files
and Microsoft Office**

Revision	Date
1.0	22 Jul. 2009

CONTENTS

1. Introduction
2. Importing XML files into Microsoft Access 2003
3. Importing XML files into Microsoft Excel 2003

1. Introduction

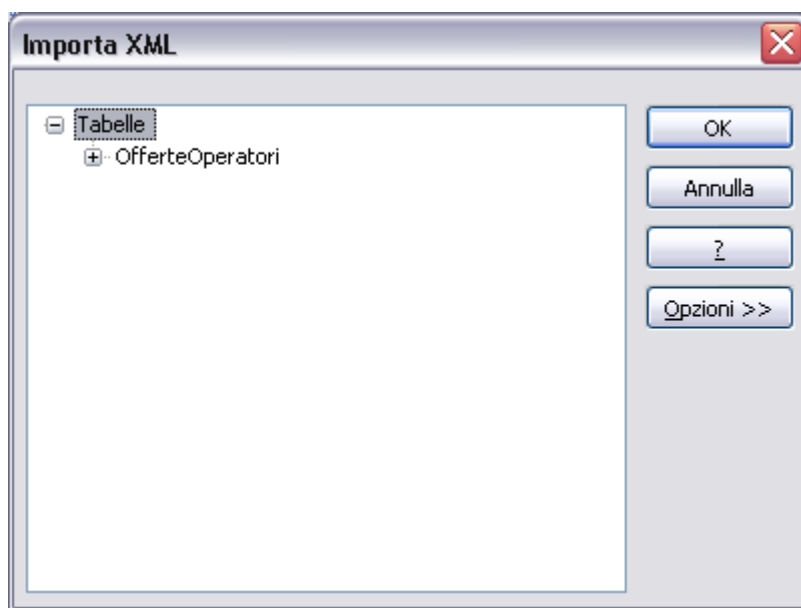
This document describes the technical details to import the XML files posted on GME's website www.mercatoelettrico.org (in particular, the files of public-domain bids/offers) into Microsoft Access 2003 and Excel 2003.

2. Importing XML files into Microsoft Access 2003

Let us take the example of the file “20090701OfferteFreePubbliche.xml” (public-domain bids/offers).

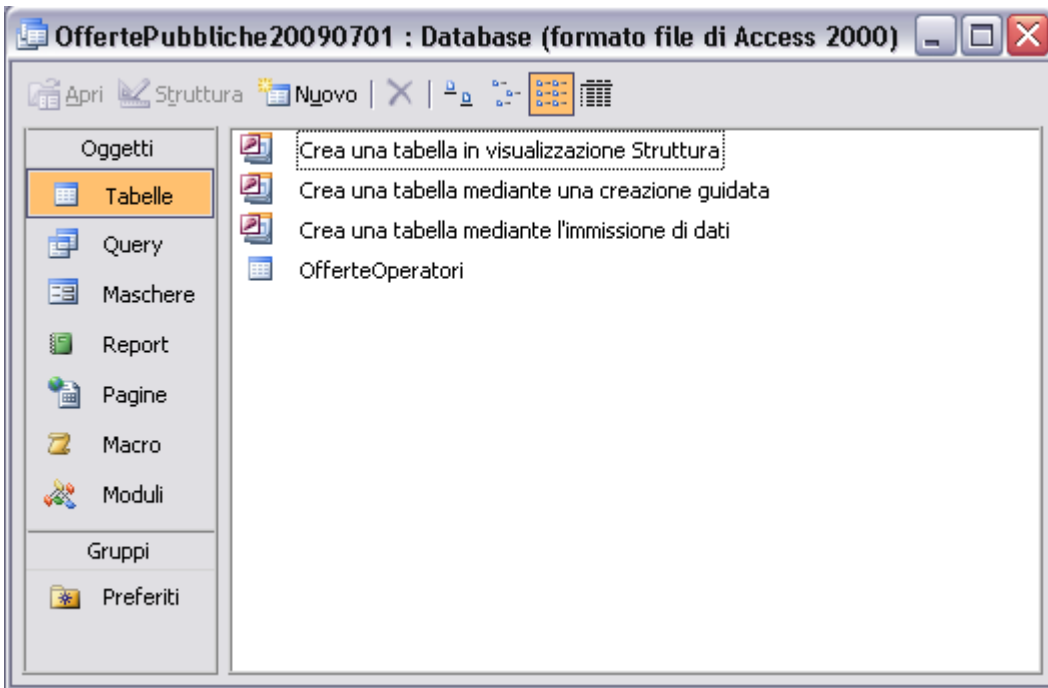
After downloading the XML file, follow the steps described below to import it into Microsoft Access 2003:

- open the Microsoft Access 2003 application;
- on the **File** menu, click **Create New Database** using **Blank Database**;
- enter the name of the new Microsoft Access 2003 database (e.g. “OffertePubbliche20090701” - public-domain bids/offers) to be created;
- on the **File** drop-down menu, click **Get external data-Import**
- select the XML file and import it;
- in the following menu



click OK.

You will get the following table:



By selecting the newly created table “OfferteOperatori” (operators’ bids/offers), you will get:

PURPOSE_CD	TYPE_CD	STATUS_CD	MARKET_CD	UNIT_REFERE	MARKET_PAR	INTERVAL_NO	BID_OFFER_CD	TRANSACTION	BALANCED_RI	QUANTITY_NO	AWARDED_QI	ENERGY_PRICE	MERIT	ORDER_PARTIAL_QTY	ADJ_QUANTITY	ADJ_ENERGY	GRID
BID	REG	ACC	MGP	UC_DP0012_C1_12QGA6C6E1		1	20090701	9181052130721		0,614	0,614	0	254	N	0	0	PSR_C
BID	REG	ACC	MGP	UC_DP0012_C1_12QHA6C6E2		2	20090701	9181052130776		0,589	0,589	0	255	N	0	0	PSR_C
BID	REG	ACC	MGP	UC_DP0012_C1_12QIA6C6E3		3	20090701	9181052130830		0,515	0,515	0	259	N	0	0	PSR_C
BID	REG	ACC	MGP	UC_DP0012_C1_12QJA6C6E4		4	20090701	9181052130900		0,503	0,503	0	288	N	0	0	PSR_C
BID	REG	ACC	MGP	UC_DP0012_C1_12QKA6C6E5		5	20090701	9181052130990		0,509	0,509	0	288	N	0	0	PSR_C
BID	REG	ACC	MGP	UC_DP0012_C1_12QLA6C6E6		6	20090701	9181052131054		0,431	0,431	0	260	N	0	0	PSR_C
BID	REG	ACC	MGP	UC_DP0012_C1_12QMA6C6E7		7	20090701	9181052131107		0,304	0,304	0	263	N	0	0	PSR_C
BID	REG	ACC	MGP	UC_DP0012_C1_12QNA6C6E8		8	20090701	9181052131155		0,556	0,556	0	258	N	0	0	PSR_C
BID	REG	ACC	MGP	UC_DP0012_C1_12QOA6C6E9		9	20090701	9181052131205		0,612	0,612	0	256	N	0	0	PSR_C
BID	REG	ACC	MGP	UC_DP0012_C1_12QPA6C6EA		10	20090701	9181052131252		0,694	0,694	0	289	N	0	0	PSR_C
BID	REG	ACC	MGP	UC_DP0012_C1_12QQA6C6EB		11	20090701	9181052131300		0,722	0,722	0	288	N	0	0	PSR_C
BID	REG	ACC	MGP	UC_DP0012_C1_12QRA6C6EC		12	20090701	9181052131349		0,692	0,692	0	288	N	0	0	PSR_C
BID	REG	ACC	MGP	UC_DP0012_C1_12QSA6C6ED		13	20090701	9181052131397		0,725	0,725	0	254	N	0	0	PSR_C
BID	REG	ACC	MGP	UC_DP0012_C1_12QTA6C6EE		14	20090701	9181052131446		0,71	0,71	0	286	N	0	0	PSR_C
BID	REG	ACC	MGP	UC_DP0012_C1_12QUA6C6EF		15	20090701	9181052131495		0,679	0,679	0	257	N	0	0	PSR_C
BID	REG	ACC	MGP	UC_DP0012_C1_12QVA6C6F0		16	20090701	9181052131544		0,701	0,701	0	286	N	0	0	PSR_C
BID	REG	ACC	MGP	UC_DP0012_C1_12QWA6C6F1		17	20090701	9181052131595		0,701	0,701	0	256	N	0	0	PSR_C
BID	REG	ACC	MGP	UC_DP0012_C1_12QXA6C6F2		18	20090701	9181052131642		0,581	0,581	0	253	N	0	0	PSR_C
BID	REG	ACC	MGP	UC_DP0012_C1_12QYA6C6F3		19	20090701	9181052131692		0,523	0,523	0	283	N	0	0	PSR_C
BID	REG	ACC	MGP	UC_DP0012_C1_12QZA6C6F4		20	20090701	9181052131741		0,528	0,528	0	252	N	0	0	PSR_C
BID	REG	ACC	MGP	UC_DP0012_C1_12R0A6C6F5		21	20090701	9181052131789		0,479	0,479	0	288	N	0	0	PSR_C
BID	REG	ACC	MGP	UC_DP0012_C1_12R1A6C6F6		22	20090701	9181052131836		0,603	0,603	0	257	N	0	0	PSR_C
BID	REG	ACC	MGP	UC_DP0012_C1_12R2A6C6F7		23	20090701	9181052131881		0,706	0,706	0	288	N	0	0	PSR_C
BID	REG	ACC	MGP	UC_DP0012_C1_12R3A6C6F8		24	20090701	9181052131932		0,666	0,666	0	254	N	0	0	PSR_C
BID	REG	ACC	MGP	UC_DP0012_C1_12QGA6C6F9		1	20090701	9181052130721		0,108	0,108	0	255	N	0	0	PSR_C
BID	REG	ACC	MGP	UC_DP0012_C1_12QHA6C6FA		2	20090701	9181052130776		0,11	0,11	0	256	N	0	0	PSR_C
BID	REG	ACC	MGP	UC_DP0012_C1_12QIA6C6FB		3	20090701	9181052130830		0,113	0,113	0	260	N	0	0	PSR_C
BID	REG	ACC	MGP	UC_DP0012_C1_12QJA6C6FC		4	20090701	9181052130900		0,126	0,126	0	259	N	0	0	PSR_C
BID	REG	ACC	MGP	UC_DP0012_C1_12QKA6C6FD		5	20090701	9181052130990		0,131	0,131	0	289	N	0	0	PSR_C
BID	REG	ACC	MGP	UC_DP0012_C1_12QLA6C6FE		6	20090701	9181052131054		0,14	0,14	0	261	N	0	0	PSR_C
BID	REG	ACC	MGP	UC_DP0012_C1_12QMA6C6FF		7	20090701	9181052131107		0,122	0,122	0	264	N	0	0	PSR_C
BID	REG	ACC	MGP	UC_DP0012_C1_12QNA6C700		8	20090701	9181052131155		0,183	0,183	0	259	N	0	0	PSR_C
BID	REG	ACC	MGP	UC_DP0012_C1_12QOA6C701		9	20090701	9181052131205		0,291	0,291	0	257	N	0	0	PSR_C
BID	REG	ACC	MGP	UC_DP0012_C1_12QPA6C702		10	20090701	9181052131252		0,285	0,285	0	259	N	0	0	PSR_C
BID	REG	ACC	MGP	UC_DP0012_C1_12QQA6C703		11	20090701	9181052131300		0,339	0,339	0	259	N	0	0	PSR_C
BID	REG	ACC	MGP	UC_DP0012_C1_12QRA6C704		12	20090701	9181052131349		0,368	0,368	0	289	N	0	0	PSR_C
BID	REG	ACC	MGP	UC_DP0012_C1_12QSA6C705		13	20090701	9181052131397		0,326	0,326	0	255	N	0	0	PSR_C
BID	REG	ACC	MGP	UC_DP0012_C1_12QTA6C706		14	20090701	9181052131446		0,257	0,257	0	257	N	0	0	PSR_C
BID	REG	ACC	MGP	UC_DP0012_C1_12QUA6C707		15	20090701	9181052131495		0,266	0,266	0	288	N	0	0	PSR_C
BID	REG	ACC	MGP	UC_DP0012_C1_12QVA6C708		16	20090701	9181052131544		0,255	0,255	0	257	N	0	0	PSR_C
BID	REG	ACC	MGP	UC_DP0012_C1_12QWA6C709		17	20090701	9181052131595		0,228	0,228	0	257	N	0	0	PSR_C
BID	REG	ACC	MGP	UC_DP0012_C1_12QXA6C70A		18	20090701	9181052131642		0,206	0,206	0	254	N	0	0	PSR_C
BID	REG	ACC	MGP	UC_DP0012_C1_12QYA6C70B		19	20090701	9181052131692		0,169	0,169	0	254	N	0	0	PSR_C
BID	REG	ACC	MGP	UC_DP0012_C1_12QZA6C70C		20	20090701	9181052131742		0,167	0,167	0	253	N	0	0	PSR_C
BID	REG	ACC	MGP	UC_DP0012_C1_12R0A6C70D		21	20090701	9181052131789		0,146	0,146	0	259	N	0	0	PSR_C
BID	REG	ACC	MGP	UC_DP0012_C1_12R1A6C70E		22	20090701	9181052131836		0,143	0,143	0	288	N	0	0	PSR_C
BID	REG	ACC	MGP	UC_DP0012_C1_12R2A6C70F		23	20090701	9181052131881		0,15	0,15	0	289	N	0	0	PSR_C
BID	REG	ACC	MGP	UC_DP0012_C1_12R3A6C710		24	20090701	9181052131932		0,141	0,141	0	255	N	0	0	PSR_C
BID	REG	ACC	MGP	UC_DP0012_NH		1	20090701	9180052116956		10	10	0	38	N	0	0	PSR_N

3. Importing XML files into Microsoft Excel 2003

The XML file of public-domain bids/offers is very bulky. To import it into Excel, it is more convenient to export the Access file. Let us take the example of the file “20090701OfferteFreePubbliche.xml” (public-domain bids/offers) and the related MDB (Access) file, created in the previous example: “OffertePubbliche20090701.mdb”.

To save the data in Excel format, follow the steps described below:

- open the Microsoft Access 2003 application;
- on the **File** drop-down menu, click **Open**;
- select the previously created mdb file and open it;
- select the “OfferteOperatori” (operators’ bids/offers) table;
- on the **File** menu, select **Export...**;
- enter the name of the new Microsoft Excel file, by selecting the *.xls format (e.g.: “OfferteOperatori20090701.xls”);
- select **Export**.

The data will be exported into an Excel sheet.

N.B. If the number of rows (“bids/offers” on a given day) of the Access DB exceeds 65536, the excess lines will be lost owing to a limit of Microsoft Office Excel 2003, as shown in the DB table “OfferteOperatori_ErroriEsportazione” (operators’ bids/offers_export errors). The problem will not arise in Microsoft Office Excel 2007.